



SJEC-0-ESCP-20191018

We reserve the right to alter some of specifications and descriptions given here in without prior notices

ESCALATOR & PASSENGER CONVEYOR



SJEC

Elevators & Escalators
since 1992

A Committed, Reliable & Responsible Elevator & Escalator Manufacturer since 1992

In The Business of Sharing Success

Briefs

SJEC

Elevators & Escalators
since 1992



Pavilion of corporation



Corridor of corporation



Office area of corporation



SMT Products Line

CORPORATION DATA:

- Land area: 180000m²,
- Manufacturing area: 140000m²,
- Test tower height: 140m,
- Manpower: 2700

ANNUAL MANUFACTURING CAPACITY:

- 20000 units elevators,
- 10000 units escalators and moving walks

INTERNATIONAL CERTIFICATION:

- ISO9001, ISO14001, OHSAS1800 by DNV, SA8000 by TÜV
- Products Certificates by TÜV

MARKETING:

- Products sold over 100 countries around the world. Such as Asia, Europe, Oceania, Africa, America and etc.



KUKA Robot



SAVANINI Products Line



Workshop

MANUFACTURE FACILITY

Believed that best quality comes from the best equipment, SJEC has imported the world's first class facilities. At present, SJEC has 6 sheet metal lines, SMT automatic electronic product line, SALVAGNINI flexible product lines, KUKA robots, welding robots, escalator assembly product lines, etc. All these can well guarantee our manufacturing quality.

GOOD APPEARANCE

As a part of the building, appearance of escalator should be harmonious with architecture style. A variety of appearance solution could be designed. Outer cladding of escalator could be provided by SJEC or by local to be suitable to architecture.



Color plate



LED spot lighting



Hairline Stainless Steel LED spot lighting



Ti-Aluminum plate LED spot lighting



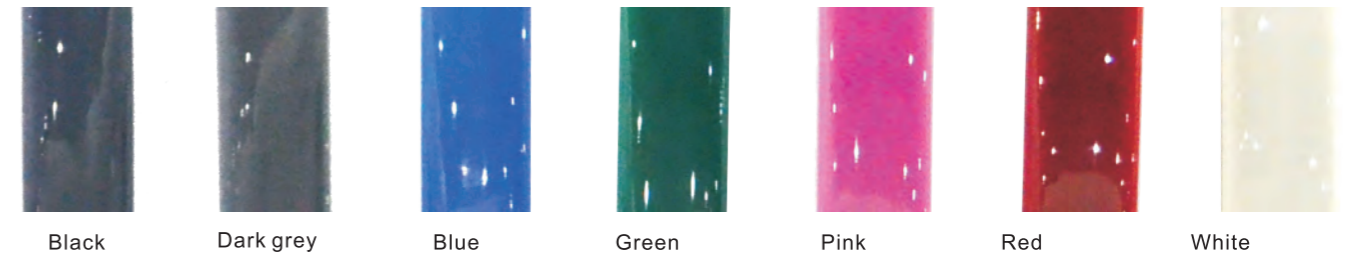
Mirror Stainless Steel LED spot lighting



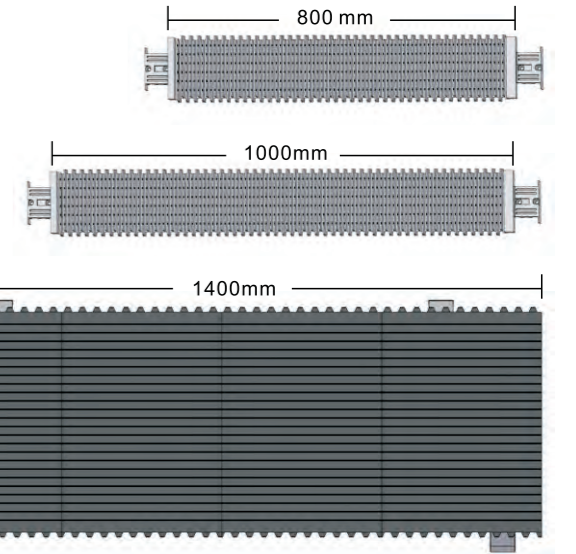
Glass outer cladding



HANDRAIL (Different color as option)

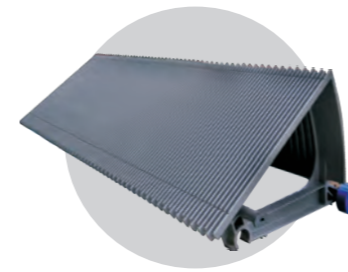


Various optional specifications are available, such as appearance options according to different architecture style, and the functions according to clients' requirements.

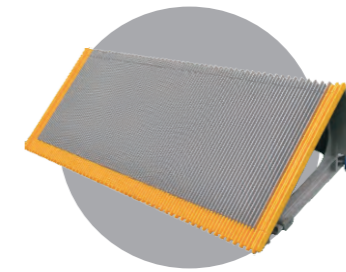


PALLETS
Die-cast aluminum 800~1400mm

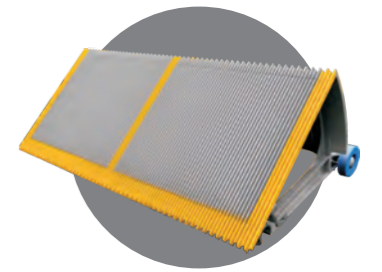
STEP



Aluminum alloy Die-cast
(gray color as default)



Aluminum alloy Die-cast
With yellow synthetic resin
(gray color as default)



Aluminum alloy Die-cast
With yellow painted line
(gray color as default)

OPTIONAL FEATURES



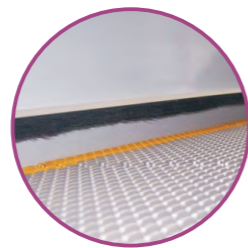
Handrail Entrance



Combs Lighting



Anit-climb Device



Skirting Brush



Skirting Lighting

FES Escalator

Silence and comfort. The new generation has inherited the traditional safety, reliability, high efficiency style and combined with updated market trends as well as tailored solutions. It is widely used for shopping malls, Hotels, office blocks and etc.



Avnat mall, Israel

Type	FES
Inclination	30° /35°
Step width(mm)	600/800/1000
Horizontal step run (mm)	800/1200
Speed (m/s)	0.5
Power supply	AC 3 phase.5 wire50Hz/60Hz
Installation position	Indoor/Outdoor
Rise(m)	2~6/7.5 (Details as following)

Rise (m)	Inclination	Horizontal step Qty
2~6	30°/35°	2
2~7.5	30°	3

Type	Standard	Optional
Balustrade design	Vertical safety glass (10mm safety tempered glass)	
Balustrade profile	Q235/SS	
Handrail	Black	Other colors
Deckings	Hairline SS	
Skirting panel	Hairline SS	
Step	Aluminum alloy Die-cast, gray color	
Landing plate	Punched SS	Etched SS/Extrude aluminum
Operation panel	Red emergency stop button and up/down key switch	



Brisbane Royal Hospital, Australia



Science&Technology Hall, Beijing China

FEH Escalator

Weatherproof and unique balustrade design, conform to special customer specifications. It is suit for airport, subway and overpass etc.

Type	FEH
Inclination	30° / 35°/23.2° /27.3°
Step width(mm)	600/800/1000
Horizontal step run (mm)	800/1200/1600
Speed (m/s)	0.5/0.65
Power supply	AC 3 phase.5 wire50Hz/60Hz
Installation position	Indoor/Outdoor
Rise(m)	2~6/8/12/15(Details as following)



Rise (m)	Inclination	Horizontal step Qty	Upper radius(mm)
2~6	30°/35°	2	1500
2~8	30°	3	1500
2~12 (max. speed 0.65m/s)	23.2°/27.3°/ 30°	3/4	2700
2~15(max. speed 0.5m/s)	23.2°/27.3°/ 30°	3/4	2700

Type	Standard	Optional
Balustrade design	Vertical safety glass(10mm safety tempered glass)	Inclined SS
Balustrade profile	Hairline SS	
Handrail	Black	Other colors
Deckings	Hairline SS	
Skirting panel	Hairline SS	
Step	Aluminum alloy Die-cast, gray color	
Landing plate	Etched Stainless steel	Extrude aluminum with surface of stainless steel/Extrude aluminum
Operation panel	Red emergency stop button and up-down key switch	



Xiamen, China



Sydney, Australia

Passenger Conveyor

Is reliable, high efficiency, easy for maintenance, which is suit for hypermarket and airport.

Specs	Passenger conveyor		
	FET	FEF	FEW
Type	FET	FEF	FEW
Inclination	10° 11° 12°	10° 11° 12°	0° – 6°
Pallet width (mm)	800/1000	800/1000	1000/1200/1400
Horizontal pallet run (mm)	400(upper landing)	400	N/A
Speed (m/s)	0.5		
Power supply	AC 3 phase.5 wire50Hz/60Hz		
Installation position	Indoor/Outdoor		
Rise/Length(m)	H: 2~7.5	H: 2~7.5	L: 20~120

Type	Standard	Optional
Balustrade design	Vertical safety galss(10mm safety tempered glass)	Inclined SS for FEW
Balustrade profile	Hairline SS	
Handrail	Black	Other colors
Deckings	Hairline SS	
Skirting panel	Hairline SS	
Pallet	Die-cast aluminum	
Landing plate	Punched SS	Etched SS/Extrude aluminum
Operation panel	Red emergency stop button and up-down key switch	



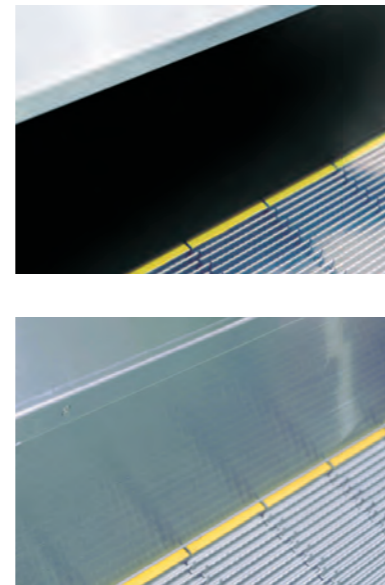
Auchan, China



NCC, Sweden



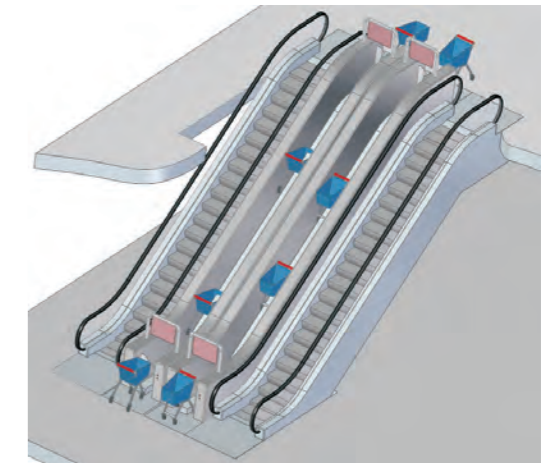
Dublin, Ireland



FEB Trolley Conveyor

A shopping carts/trolleys transportation system with high efficiency, small installation space, low energy consumption. Usually installed besides escalators, separate person / trolley into 2 ways for better safety and convenience.

Type	FEW
Inclination	30° / 35°
Speed (m/s)	0.5
Power supply	AC 3 phase, 5 wire, 50Hz/60Hz
Installation position	Indoor
Rise	2~6m



Spec	Standard	Optional
Cladding	Q235	SS
Guide rail	Hairline SS	
Landing plate	Anti-skidding SS	
Operation panel	Red emergency stop button, start key switch	



NOTE:
The cart shall be suitable to the conveyor. It is recommended to be ordered from us.
Trolley conveyor is not compliant with and in scope range of EN115.



Yonghui Superstores, China.

Features

FUNCTIONS	FES	FEH	FET/FEF	FEW	FEB
Stop button	●	●	●	●	●
Key switch	●	●	●	●	●
Handrail entrance contact	●	●	●	●	X
Pallet/Step-chain broken contact	●	●	●	●	●
Pallet/Step sag contact	●	●	●	●	X
Phase monitor	●	●	●	●	●
Zinc steel flying wheel cover	●	●	●	●	X
Pallet/Step reversing fences	●	●	●	●	X
Motor overload	●	●	●	●	X
Motor overheat	●	●	●	●	●
Comb contact	●	●	●	●	X
Maintenance interlock	●	●	●	●	X
Alarm buzzer	●	●	●	●	●
Overspeed & unintended reversal monitor	●	●	●	●	X
Handrail anti-static roller	●	●	●	●	X
Pallet/Step anti-static brush	●	●	●	●	X
Service brake release contact	●	●	●	●	X
Soft stop	●	●	●	●	X
Handrail speed monitor	●	●	●	●	X
Switchboard/power box	●	●	●	●	●
Landing plate switch	●	●	●	●	●
Alarm for stop distance overrun	●	●	●	●	X
Pallet/Step missing contact	●	●	●	●	X
Auto lubrication system (with oil collector)	●	●	●	●	X
LCD fault display (on the outer decking)	●	●	●	●	X
Earth leakage circuit-breaker for illumination circuit	●	●	●	●	X
Fire interface (110V)	●	●	●	●	●
Step upthrust contact	●	●	X	X	X
Safety brake on main shaft	○	●	○	○	X
Additional emergency stop device	○	○	●	○	X
Skirting contact	○	○	X	○	X
Pallet/Step gap illumination	○	○	○	○	X
Broken drive-chain contact	○	○	○	○	X
4 dry contacts for remote monitoring	○	○	○	○	X
Skirting lighting	○	○	○	○	X
LED comb lighting	○	○	○	○	X
Balustrade lighting	○	○	○	○	X
LED traffic light (must required in case of auto-	○	○	○	○	●
Machine room lighting	○	○	○	○	X
Cable connector for divided pieces	○	○	○	○	X
Special requirement for cable	○	○	○	○	X
Handrail broken contact	○	○	○	○	X
Machine room stair	○	○	○	○	X
Outside cladding	○	○	○	○	X
Fire interface (24V)	○	○	○	○	X
Skirting brush	○	○	○	○	X
Anti-climb device	○	○	○	○	X
Semi-outdoor installation package	○	○	○	○	X
Outdoor installation package	○	○	○	○	X
Comb heater	○	○	○	○	X
Truss and comb heater	○	○	○	○	X

● Standard ○ Optional X Not available

FES Layout for Commercial Escalator

$L = (AA + BB + CC) \times 15_0^*$

Hoisting hole (By others)
Load capacity Min.50kN

Vertical deflector (By others)

Detail F

Detail E

Detail G (By others)
Gaps filled with silica gel (By others)
Fin. floor level (By others)
Supports (By others) Keep true level

For slim-vertical balustrade

A	600	800	1000
B	837	1037	1237
C	1145	1345	1545
D	1200	1400	1600
E	1720	1920	2120

Type	a	AA	BB	CC	DD	EE	FF	JJ	KK	MM
FES-302	30°	2195	2449	H X 1.732	2238	2357	4200	870	7800	960
FES-352	35°	2229	2510	H X 1.428	2386	2304	4000	850	7000	980
FES-303	30°	2595	2964	H X 1.732	2638	2871	4600	870	8300	960

A	Reaction Force (KN)	
	W/o intermediate support	With one intermediate support
600	$R1 = 3.35 \times L + 15.5$	$R1 = 3.35 \times L + 11.5$
	$R2 = 3.35 \times L + 10$	$R2 = 3.35 \times L + 4.5$
		$R3 = 3.35 \times L + 3.5$
800	$R1 = 3.7 \times L + 17$	$R1 = 3.7 \times L + 12$
	$R2 = 3.7 \times L + 11$	$R2 = 3.7 \times L + 4.7$
		$R3 = 3.7 \times L + 4$
1000	$R1 = 4.15 \times L + 18.5$	$R1 = 4.15 \times L + 12.5$
	$R2 = 4.15 \times L + 11.5$	$R2 = 4.15 \times L + 4.9$
		$R3 = 4.15 \times L + 4.5$

Note: 1.L, L1, L2 is in meter

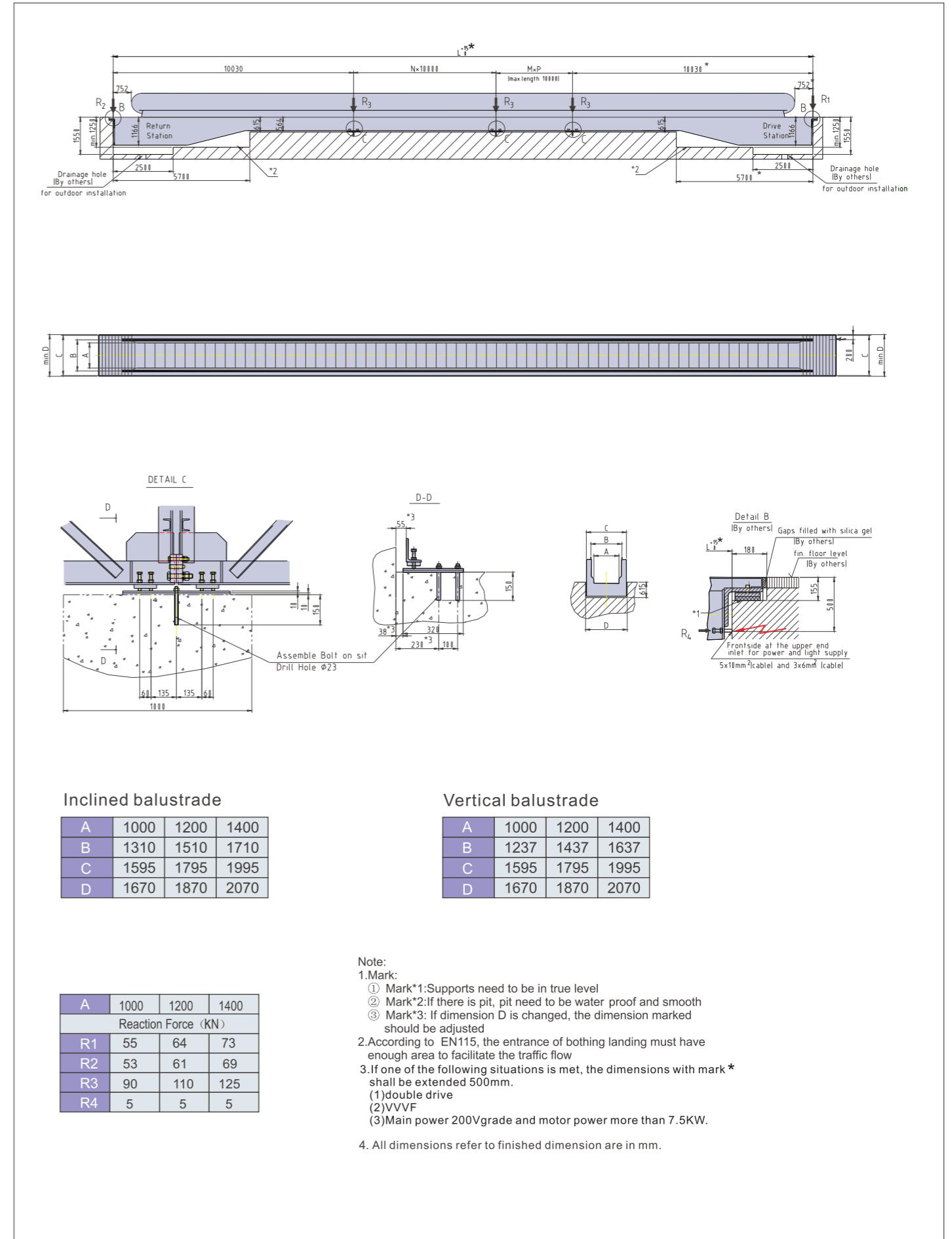
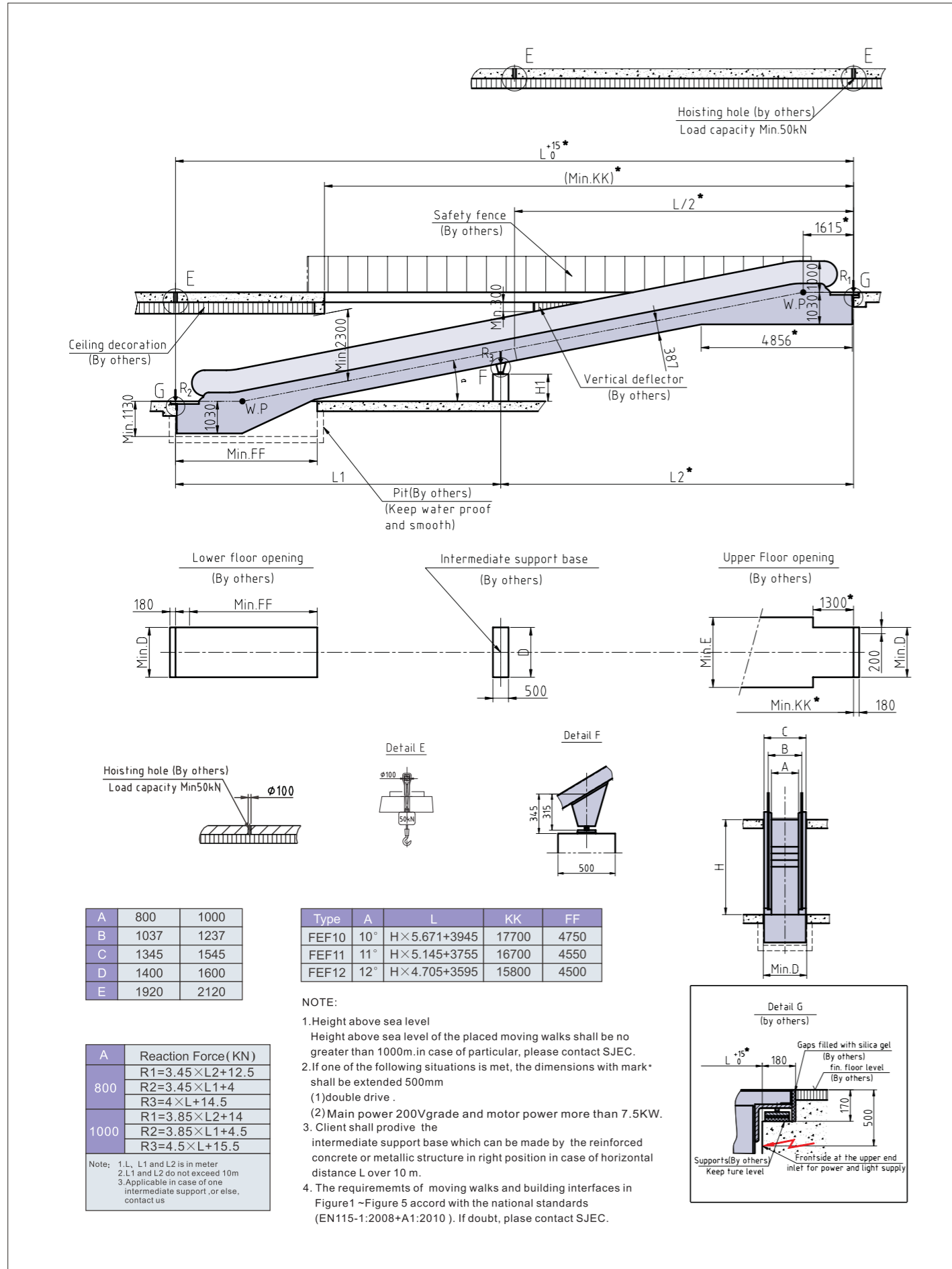
NOTE:

- Height above sea level
Height above sea level of the placed escalators shall be no greater than 1000m. in case of particular, please contact SJEC.
- If one of the following situations is met, the dimensions with mark * shall be extended 500mm
(1) 600 mm step.
(2) double drive.
- Main power 200V grade and motor power more than 7.5KW.
Client shall provide the intermediate support base which can be made by the reinforced concrete or metallic structure in right position in case of horizontal distance L over 15 m.
- The requirements of escalators and building interfaces in Figure 1 ~ Figure 5 accord with the national standards (EN115-1:2008+A1:2010). If doubt, please contact SJEC.

We reserve the right to alter some of specifications and descriptions given here in without prior notices.

FEF Layout for Passenger Conveyor

FEW Layout for Passenger Conveyor

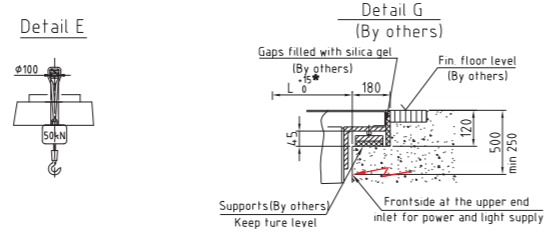
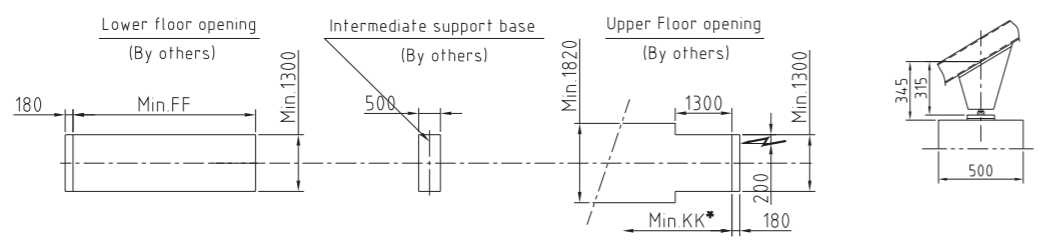
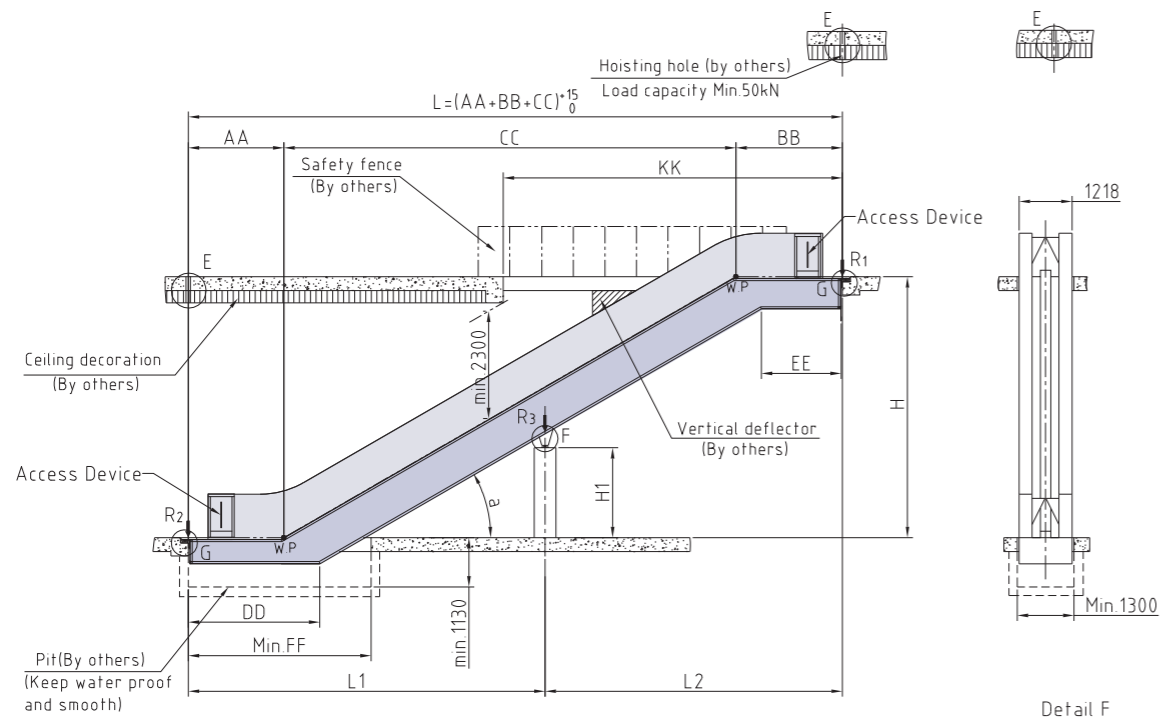


We reserve the right to alter some of specifications and descriptions given here in without prior notices.

We reserve the right to alter some of specifications and descriptions given here in without prior notices.

FEB Layout for Trolley Conveyor

Project Highlight



Reaction Force (KN)	
W/o intermediate support	With one intermediate support
$R1 = 3.35 \times L + 15.5$	$R1 = 3.35 \times L2 + 11.5$
$R2 = 3.35 \times L + 10$	$R2 = 3.35 \times L1 + 4.5$
	$R3 = 3.35 \times L + 3.5$

Note: L, L1, L2 is in meter

Type	a	AA	BB	CC	DD	EE	FF	KK
FEB-302	30°	2195	2449	H X 1.732	2466	2118	4200	7800
FEB-352	35°	2229	2510	H X 1.428	2560	2114	4000	7000
FEB-303	30°	2595	2964	H X 1.732	2866	2518	4600	8300

NOTE:

- If conveyors are located adjacent to escalators, the requirements of escalators and building interfaces shall be accord with the national standards (EN115-1:2008+A1:2010).
- Access restriction device shall be provided at the ends of the conveyors.
- If there are escalators, devices and safety signs shall be provided to prevent the shopping carts from accessing the escalators.
- Devices and safety signs shall be provided at the ends of conveyors to prevent persons from getting into the conveyors.
- At the exit(s) of each individual shopping cart conveyor a sufficient unrestricted area shall be available to accommodate persons and shopping carts. The width of the unrestricted area shall be at least correspond to the distance between the outer edges of the balustrade plus 400 mm on each side. The depth shall be at least 3.00 m measured from the end of the balustrade. It shall be permissible to reduce it to 2.50 m if the width of the unrestricted area is increased to at least double the distance between the outer edges of the balustrade plus 400 mm on each side.
- Altitude of the placed conveyors shall be no greater than 1000m. In case of particular, please contact SJEC.
- Client shall provide the intermediate support base which can be made by the reinforced concrete or metallic structure in right position in case of horizontal distance L over 15 m.

We reserve the right to alter some of specifications and descriptions given here in without prior notices.

